



# FIBERGLASS SILOS

External storage of solid  
powders and granules

## Benefits:

---

Storage of products with bulk density  
up to 1.2 kg/dm<sup>3</sup>

---

Long life thanks to a shell in reinforced fiberglass

---

Completely waterproof and weatherproof

---

Elimination of internal condensation in the  
version with insulated double wall, and option  
of fitting a dehumidification system in extreme  
environmental conditions

---

Completely non-toxic, hygienic, with high degree  
of preservation of raw material, in compliance with  
food hygiene standards

---

Internal anti-static treatment according to  
Guideline CEI

---

Compliant with Atex Directive

---

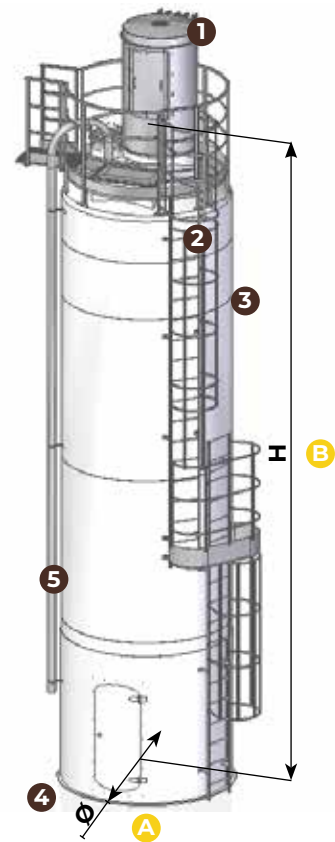


## TECHNICAL DATA

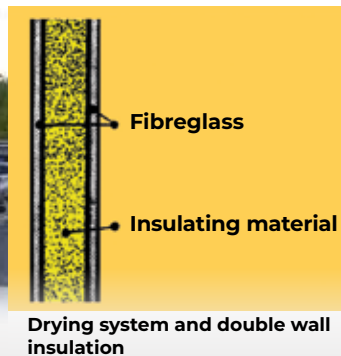
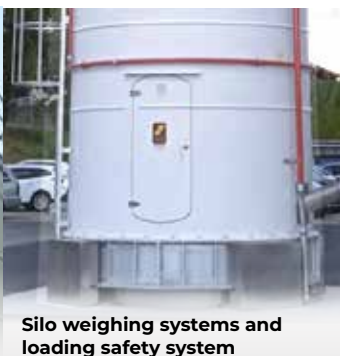
- 1 Filter
- 2 Access ladder
- 3 Silos
- 4 Weighing system
- 5 Loading pipe

| A      |        | B             |               | Cone 60°/90°  |               | Flat bottom |  |
|--------|--------|---------------|---------------|---------------|---------------|-------------|--|
| Ø [mm] | H [mm] | Capacity [m³] | Capacity* [t] | Capacity [m³] | Capacity* [t] |             |  |
| 2000   | 3900   | 6,6           | 4             | 7,8           | 4,5           |             |  |
| 2000   | 4900   | 10            | 6             | 11,2          | 6,5           |             |  |
| 2000   | 6000   | 13,3          | 8             | 14,5          | 8,5           |             |  |
| 2000   | 7000   | 16,4          | 9,5           | 17,6          | 10,5          |             |  |
| 2000   | 7500   | 18,2          | 11            | 19,4          | 11,5          |             |  |
| 2000   | 9000   | 22,7          | 13,5          | 23,9          | 14            |             |  |
| 2000   | 10000  | 25            | 15            | 26,2          | 15,5          |             |  |
| 2400   | 4650   | 12            | 7             | 14,2          | 8,5           |             |  |
| 2400   | 5100   | 13            | 8             | 16,2          | 9,5           |             |  |
| 2400   | 5900   | 18            | 10,5          | 20,2          | 12            |             |  |
| 2400   | 7500   | 25            | 15            | 27,2          | 16            |             |  |
| 2400   | 9050   | 32            | 19            | 34,2          | 20,5          |             |  |
| 2400   | 10700  | 39            | 23            | 41,2          | 24,5          |             |  |
| 2400   | 12300  | 46            | 27,5          | 48,2          | 29            |             |  |
| 2400   | 13100  | 50            | 30            | 52,2          | 31            |             |  |
| 3000   | 9000   | 45            | 27            | 52            | 31            |             |  |
| 3000   | 9800   | 50,7          | 30            | 57,7          | 34,5          |             |  |
| 3000   | 11200  | 60            | 36            | 67            | 40            |             |  |
| 3000   | 12500  | 70            | 42            | 77            | 46            |             |  |
| 3000   | 13300  | 75            | 45            | 82            | 49            |             |  |
| 3000   | 13700  | 78            | 46,5          | 85            | 51            |             |  |
| 3000   | 14600  | 83,5          | 50            | 90,5          | 54            |             |  |
| 3000   | 16800  | 100           | 60            | 107           | 64            |             |  |

\* Bulk density 0,6 kg/dm<sup>3</sup>



## Accessories



TECHNOSILOS S.r.l.  
Via Piana 67, 47032 Bertinoro (FC), ITALY  
[www.technosilos.com](http://www.technosilos.com)

